

3/4" Quick Coupling Valve, Key and Swivel Elbow

Features:

3/4" BSP/NPT Female threaded Inlet Connection

Brass/ Red brass body

One piece body design

Strong corrosion-resistant stainless steel spring prevents leakage.

Yellow thermoplastic self-closing cover for durability over years.

Stainless Steel Spring loaded covers for positive closing

and protection of valves's sealing components.

"Sprial Turn and Lock" key with inbuild handle design for gripping

Optional locking cover.



Operating Range:

Flow: 2.0 to 5.0 m³/h

Pressure Loss: 0.11 to 0.52 bar

Operating Pressure: 0.25 to 10 bar

Dimensions:

Height:

QCV (70B/BL) : 10.5cm

QCV (70BR/BRL) : 11.5cm

QCV (70B/BL) with Opener (70BK) : 19.2cm

QCV (70BR) with Opener (70BRK) : 21.1cm

Models Description:

QCV

70B: 3/4" Brass QCV

70BR: 3/4" Bronze QCV (Rainbird Compatible)

70BL: Model 70B with Lockable cover

70BRL: Model 70BR with Lockable cover

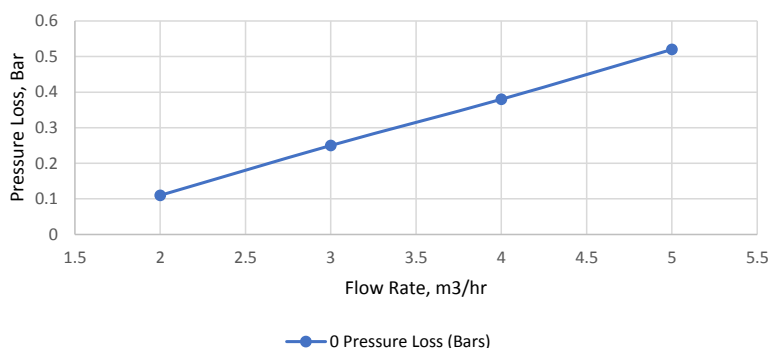
QCV Key

70BK: 3/4" Brass QCV Key (Opener for 70B, BL)

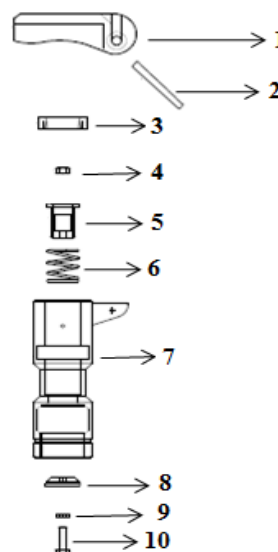
70BRK: 3/4" Bronze QCV Key (Opener for 70BR, BRL)

3/4" QCV	
Flow (m ³ /h)	Pressure Loss (Bars)
2	0.11
3	0.25
4	0.38
5	0.52

3/4" QCV Pressure Loss Curve



S.No.	Description	Material	Qty
1	Cap	TPR/TPU	1
2	Dowel Pin	Stainless Steel	1
3	Groovemate	EPDM/ NBR	1
4	Nut	Stainless Steel	1
5	Filter/ Valve	Brass	1
6	Spring	Stainless Steel	1
7	Body	Brass/Bronze	1
8	Insert	EPDM & Brass	1
9	Sealing Washer	NBR	1
10	Bolt	Stainless Steel	1



Swivel Elbow (Model: AQ-70SE)

Features:

3/4" BSP/NPT one End Female X Male threaded Connection

Made of heavy duty Brass construction for long durability

Can be easily rotate in desired direction (360degree rotation)

Leakage free design

Models	Dimensions (cm)	
	W	H
70SE	61	87